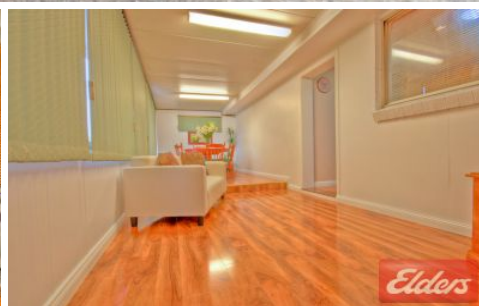


Elders



34 The Crescent Toongabbie NSW

3 1 3

A fine example of contemporary living offering excellent living spaces and a long list of A grade inclusions. 3 bedrooms, main with B.I.R, formal & informal living space, impressive timber & granite kitchen plus an exquisite bathroom & 2 toilets

Dual driveways lead to the under house garage with ample storage & 4 car tandem carport, beautiful 645sqm block.

Located in an elevated position and close to transport & Metella Rd Primary school.

This most desirable home will suit all your needs.

FOR MORE DETAILS CONTACT
SALES PROFESSIONAL: LEON GIETZMANN 0404 032 934 (LeonGietzmann.com)
SALES ASSISTANT: BEAU LYON 0414 204 034

Price : \$ 560,000

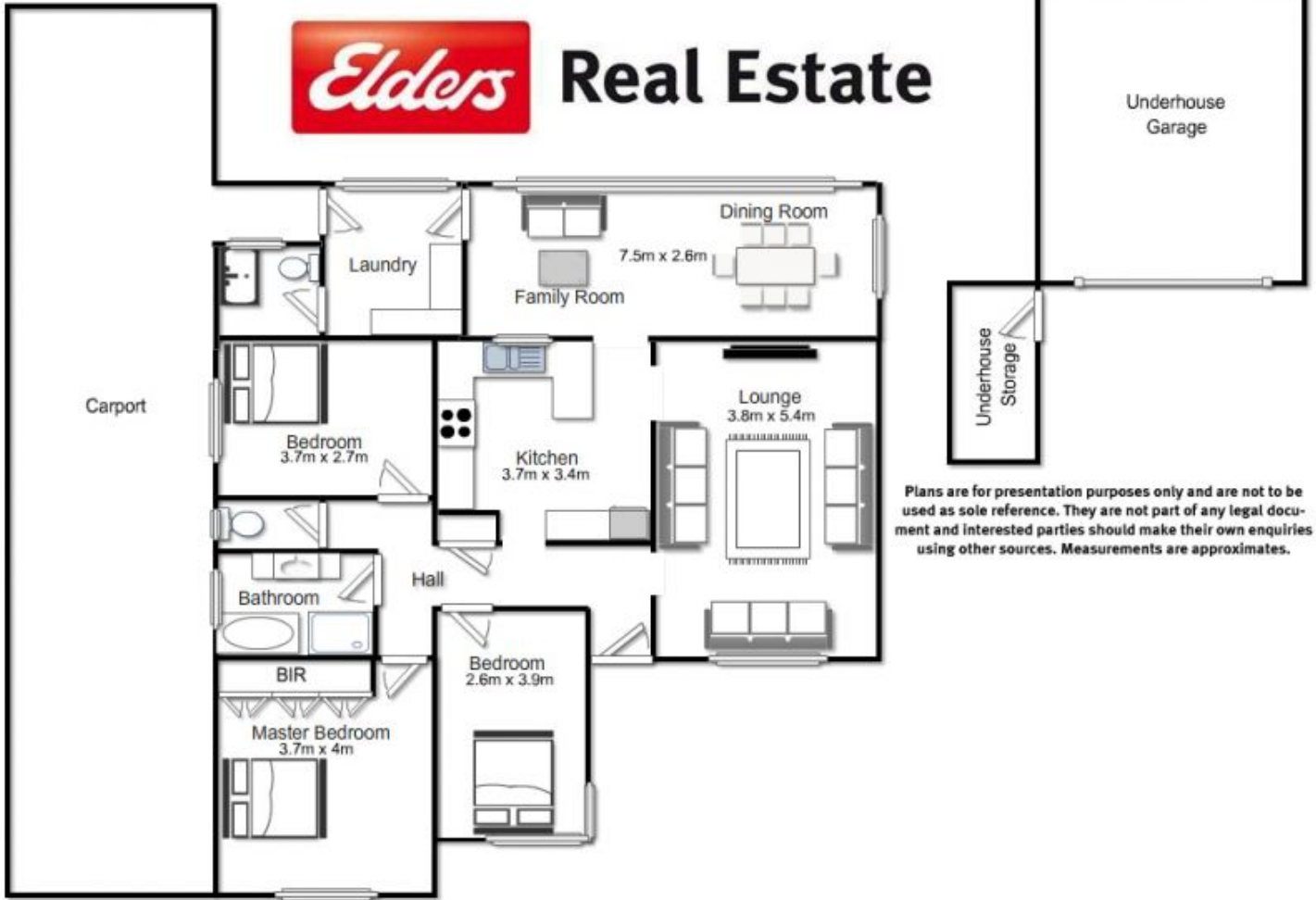
Land Size : 645 sqm

View : <https://www.elderstoongabbie.com.au/sale/nsw/western-sydney/toongabbie/residential/house/5875237>

<https://www.elderstoongabbie.com.au>



Real Estate



Plans are for presentation purposes only and are not to be used as sole reference. They are not part of any legal document and interested parties should make their own enquiries using other sources. Measurements are approximates.