



## 4/80-82 Metella Road Toongabbie NSW

3  2  2 

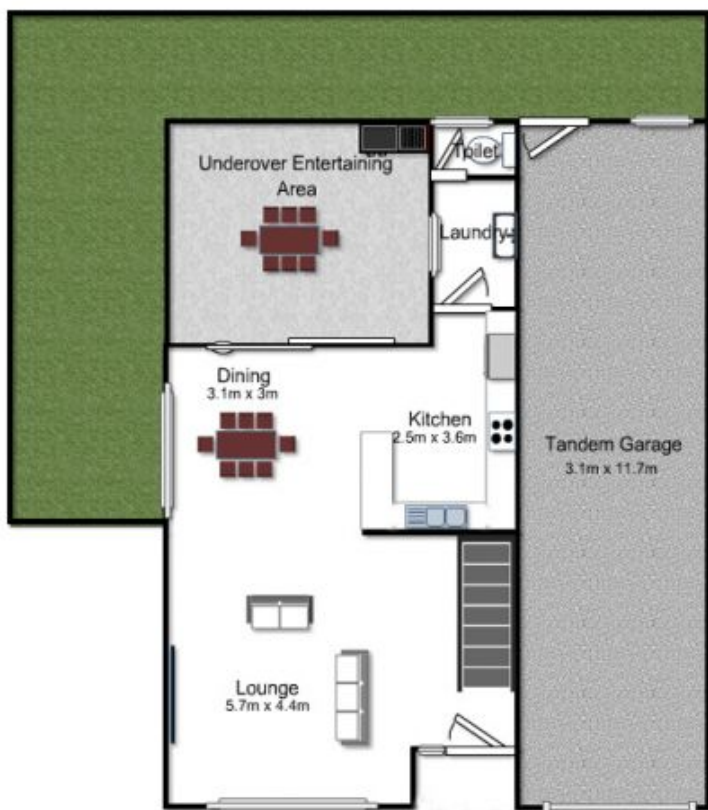
An immaculate townhouse complimented by generous proportions, a sunny aspect and convenient location ensures you will be impressed upon your first inspection. Generously appointed living areas flow effortlessly around the gourmet gas kitchen to the private, low maintenance yard creating a gentle blend of indoor/outdoor living and entertaining. 3 large bedrooms main with ensuite and 2 with built in robes, impeccable main bathroom, laundry with 3rd toilet, and a tandem lock up garage are also available. Situated in a well maintained boutique complex within a short stroll to Toongabbie station, shopping precinct and numerous schooling options creates a luxurious yet low maintenance lifestyle that is the definition of easy, convenient living. Currently leased out till 07/12/13 for \$350.00 per week.

Council Rates: \$308 per quarter

**Price** : \$ 475,500  
**Land Size** : 213 sqm  
**View** : <https://www.elderstoongabbie.com.au/sale/nsw/western-sydney/toongabbie/residential/townhouse/5875618>



**Nick Bardon**  
02 9896 2333



Ground Floor



First Floor