

# Elders



## 247 Metella Road Toongabbie NSW

3  2  4 

With its impeccable presentation and immaculate gardens this beautiful 3 bedroom, 2 bathroom brick veneer home is conveniently located close to Metella Road Primary school and is brimming with quality features and inclusions.

Sitting on an enormous 729.9m<sup>2</sup> block of land the house enjoys a spacious front and rear yard with wide side access via the double carport to an oversized full brick double garage which has ample power, lighting and built in shelving.

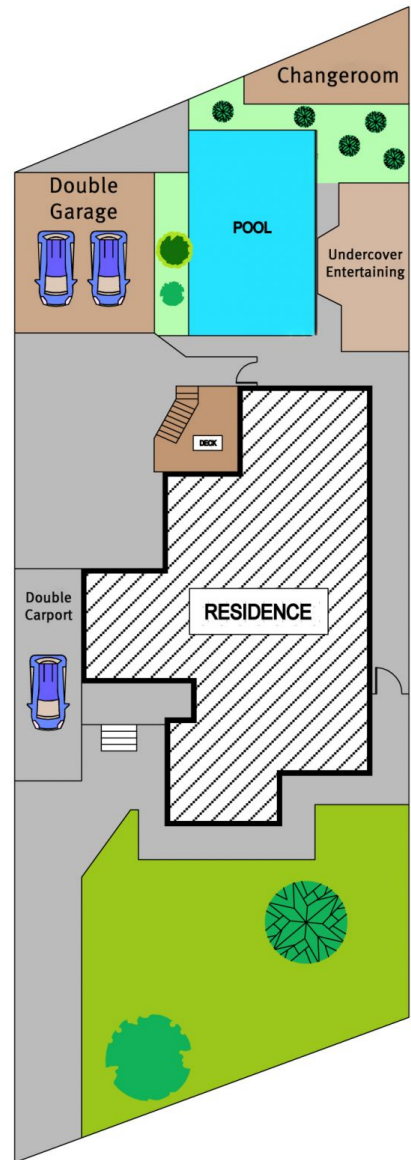
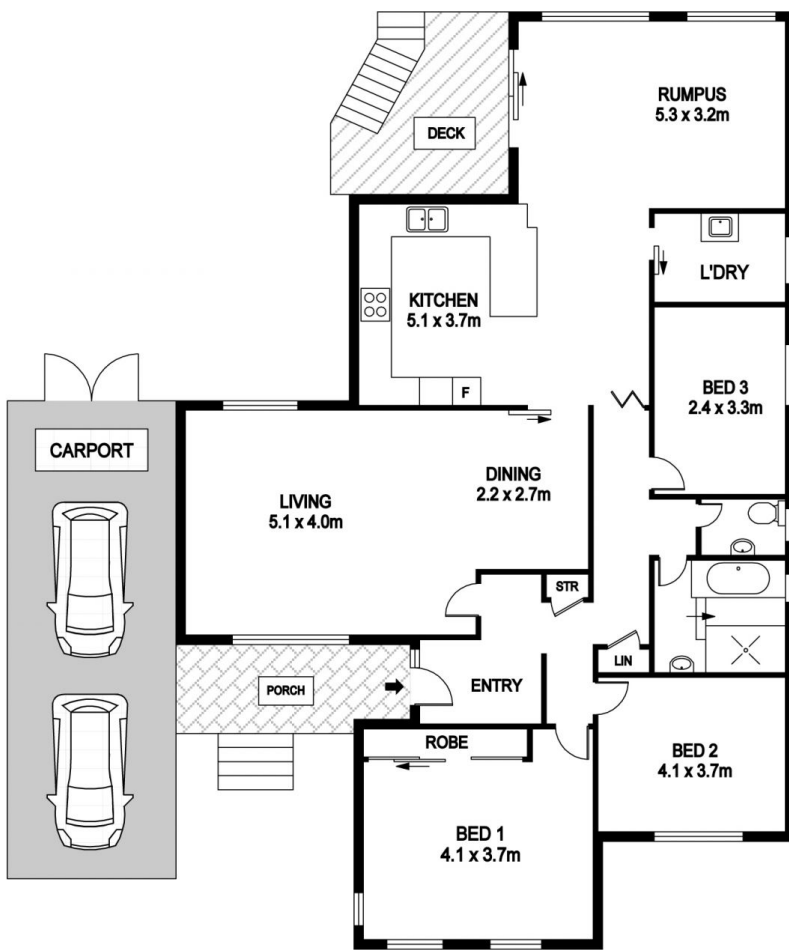
Step inside the home and discover a family friendly layout incorporating lounge and dining area plus a spacious kitchen with dishwasher and breakfast bar. Continue through to the sundrenched family room that opens out to the elevated timber deck and overlooks the glistening in ground saltwater pool and under cover entertaining area

**Price** : \$ 790,000  
**Land Size** : 729.9 sqm  
**View** : <https://www.elderstoongabbie.com.au/sale/nsw/western-sydney/toongabbie/residential/house/5876110>



**Matt Barham**  
**02 9896 2333**

<https://www.elderstoongabbie.com.au>



# 247 METELLA ROAD, TOONGABBIE

## DISCLAIMER

DIMENSIONS ARE APPROXIMATE AND SHOULD ONLY BE USED AS A GUIDE  
THEY ARE NOT TO SCALE AND NO LIABILITY WILL BE ACCEPTED.

