



15/8-10 Metella Road Toongabbie NSW

3  2  2 

Affordability and convenience combine to create a desirable first home or investment opportunity.

Perfectly located within 7 minutes walking distance to Toongabbie train station, shopping centre and cafes this 3 bedroom townhouse offers young families a friendly community lifestyle within a modern complex.

The north facing aspect ensures maximum sunlight in the living areas and bedrooms, while modern features include a gas equipped kitchen, built in wardrobes in all bedrooms, ensuite, 3 toilets, air conditioning, gas hot water and parking for 2 cars.

Low strata levies add to the desirability of this 13 year old home which will be highly sought after by families and investors alike.

Price : \$ 660,000
Land Size : 220 sqm
View : <https://www.elderstoongabbie.com.au/sale/nsw/western-sydney/toongabbie/residential/townhouse/5876297>

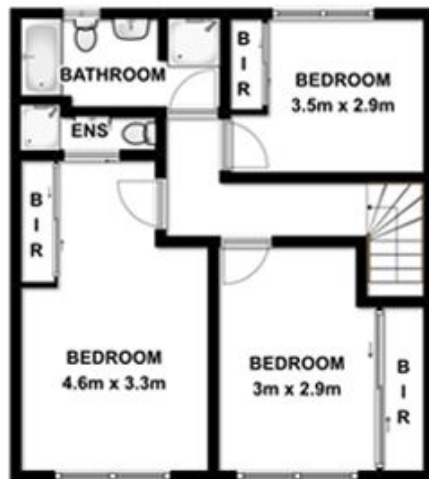


Nick Bardon
02 9896 2333



Real Estate

15/8-10 Metela Road
Toongabbie NSW 2146



Plans are for presentation purposes only and are not part of any legal document or title. They should not be used as sole reference. Interested parties should make their own enquiries using other sources. Measurements are approximates.