



14/8-10 Metella Road Toongabbie NSW

3  2  2 

Perfectly located within 7 minutes walking distance to Toongabbie train station, shopping centre and cafes this 3 bedroom townhouse offers a friendly community lifestyle within a modern complex.

Featuring:

- Spacious living area with air conditioning
- Well-appointed gas kitchen with stainless steel appliances
- 3 comfortable bedrooms with built in wardrobes
- Sizeable master bedroom with ensuite
- Large family bathroom with separate shower and bath
- Internal laundry with 3rd toilet
- Lock up garage plus second registered car space on title
- Two courtyards - front and rear, all securely fenced
- Playground and community meeting area within complex
- Northerly aspect & reserve outlook

If you're a first home buyer, investor or downsizer an

Price : \$ 575,000
Land Size : 219 sqm
View : <https://www.elderstoongabbie.com.au/sale/nsw/western-sydney/toongabbie/residential/townhouse/5876816>

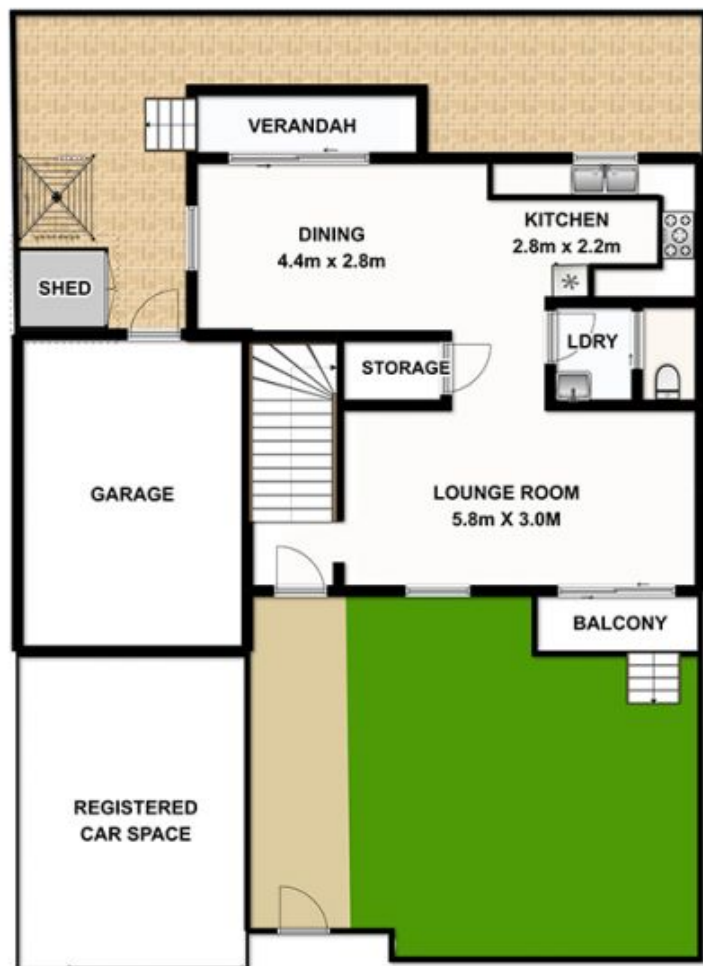


Edward Pena
02 9896 2333



Real Estate

14/8-10 Metella Road
Toongabbie NSW 2146



Plans are for presentation purposes only and are not part of any legal document or title. They should not be used as sole reference. Interested parties should make their own enquiries using other sources. Measurements are approximates.