

Elders



12/2 Rifle Range Road Northmead NSW

3 2 2

Sleek, contemporary finishes and a brilliant, open plan design combine with house like proportions to create an inviting and modern atmosphere in this impressively presented townhouse. Quality fixtures and attention to detail is evident throughout every room which includes both formal and informal living areas, with gas heating provisions, gourmet kitchen with dishwasher, breakfast bar and gas appliances, 3 generous bedrooms, 2 with built-in-ropes and main with ensuite bathroom, deluxe main bathroom plus 3rd toilet and a remote controlled double garage. French doors allow a graceful transition from indoors to the impressively landscaped, courtyard decorated with mature gardens and a private paved area ensuring the largest of parties could be easily accommodated. A desirable, gated complex on the Baulkham Hills border conveniently located close to transport, schooling options and M2 access completes this

Price : \$ 670,000
Land Size : 237 sqm
View : <https://www.elderstoongabbie.com.au/sale/nsw/parramatta/northmead/residential/townhouse/5876983>



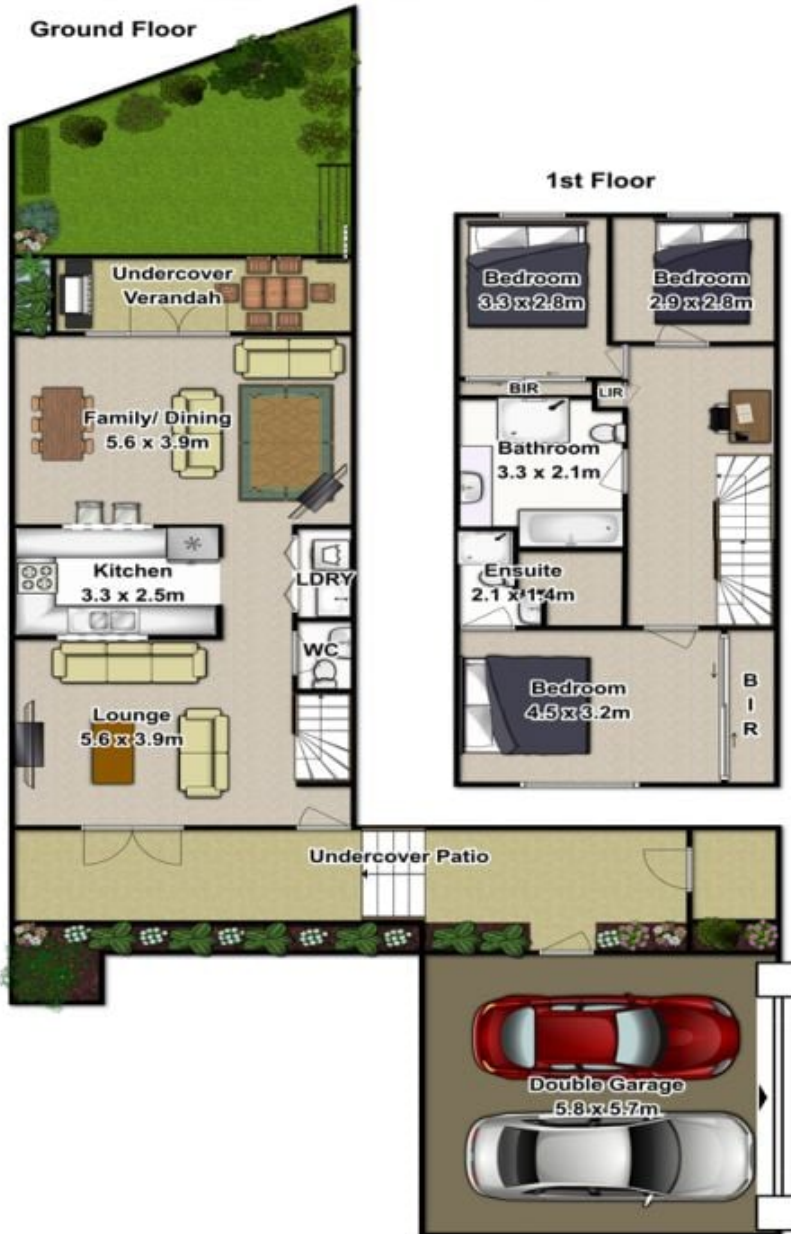
Matt Barham
02 9896 2333

<https://www.elderstoongabbie.com.au>



Real Estate

12/2 Rifle Range Road
Northmead



Plans are for presentation purposes only and are not part of any legal document or title. They should not be used as sole reference. Interested parties should make their own enquiries using other sources. Measurements are approximate.