

# Elders



## 43 Oramzi Road Girraween NSW

4  2  3 

Situated within the highly sought after Girraween Primary School Zone is this immaculately presented brick veneer Huxley home which is offered by its original owner for the first time since it was built. The location speaks for itself and offers easy access to Girraween Primary, St Anthony's Primary and Girraween Selective High School while still being within close walking distance to Toongabbie & Pendle Hill train station and main shopping precinct.

This North facing home boasts 4 bedrooms, all with built-in-robies and main with ensuite which has been updated with new fixtures and shower screen. The home further features an updated kitchen with granite benchtops and dishwasher which sits adjacent to the dining area. There is also ducted air conditioning throughout with 2 zones, an oversized lounge room with built in bar, and a spacious brand new bathroom that is finished to perfection. As you venture to the rear of the property you will continue

**Price** : \$ 890,000  
**Land Size** : 836 sqm  
**View** : <https://www.elderstoongabbie.com.au/sale/nsw/parramatta/girraween/residential/house/5877258>

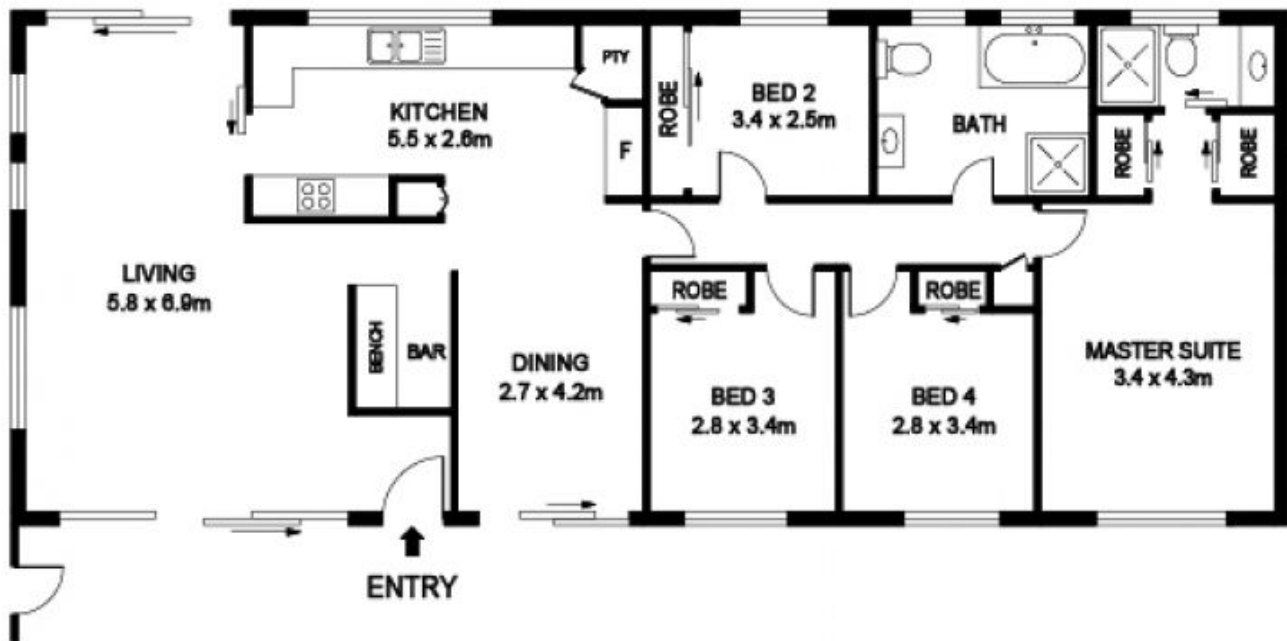
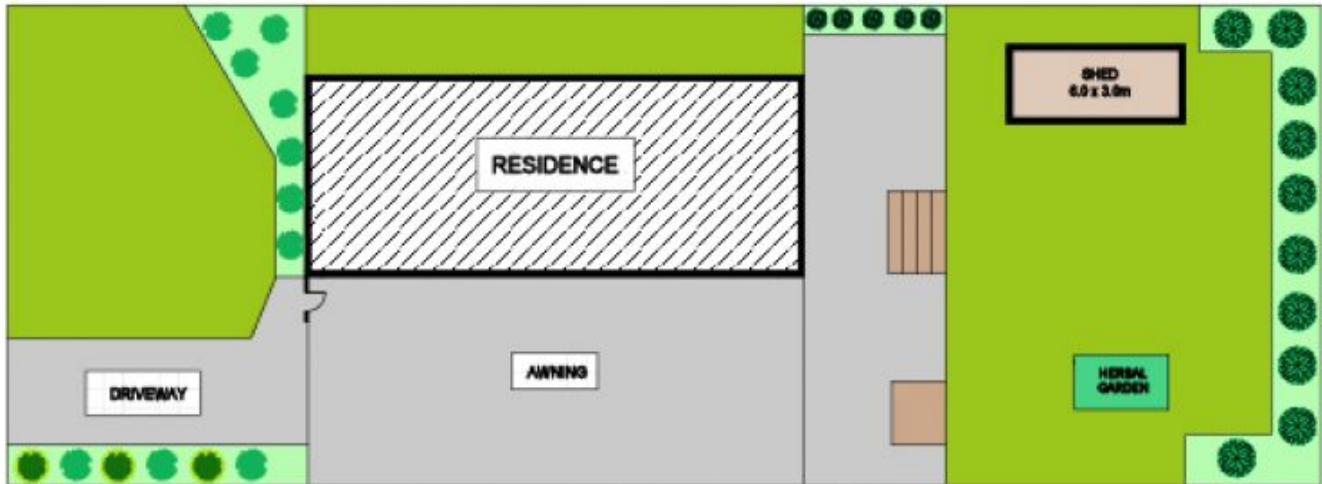


**Matt Barham**  
02 9896 2333



**Edward Pena**  
02 9896 2333

<https://www.elderstoongabbie.com.au>



## 43 ORAMZI ROAD, GIRRAWEEEN

**DISCLAIMER**

DIMENSIONS ARE APPROXIMATE AND SHOULD ONLY BE USED AS A GUIDE  
THEY ARE NOT TO SCALE AND NO LIABILITY BE ACCEPTED.

