

Elders



30 Marcia Street Toongabbie NSW

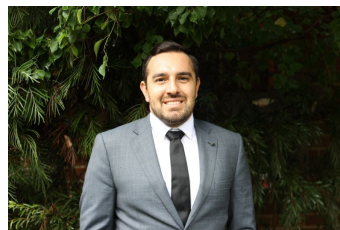
3 2 2

Set high on a North facing 717.4sqm parcel of land within walking distance to the station and schools in a peaceful yet convenient position, this gorgeous home has all the room that a growing family could need.

It is rare to find a property with such class and character. From the moment you step foot inside you will notice the attention to detail that contributes to the overall atmosphere of quality care, with finishing touches such as solid wooden architraves and picture rails, the blend of polished timber and tiled flooring throughout, classic plaster cornices and 10ft high ceilings.

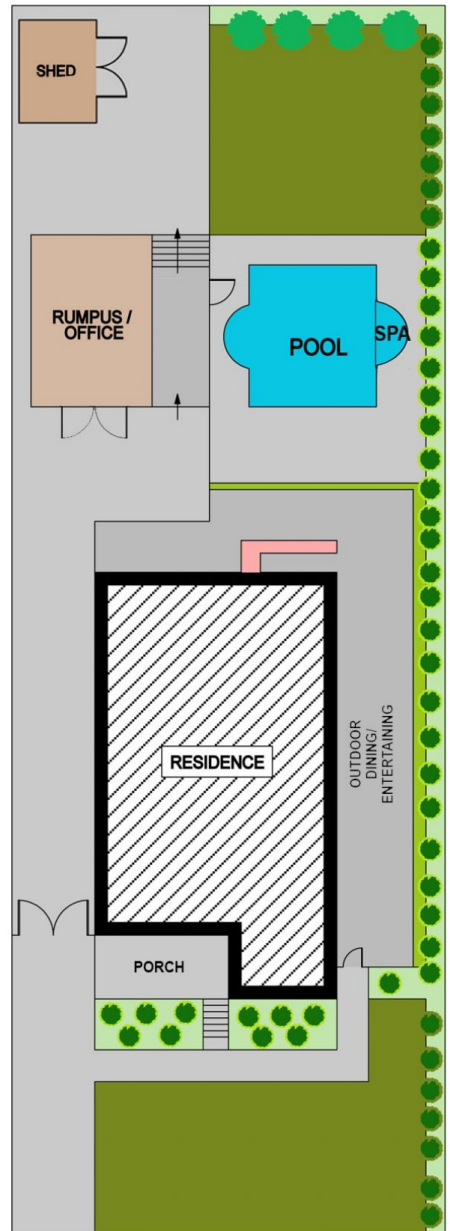
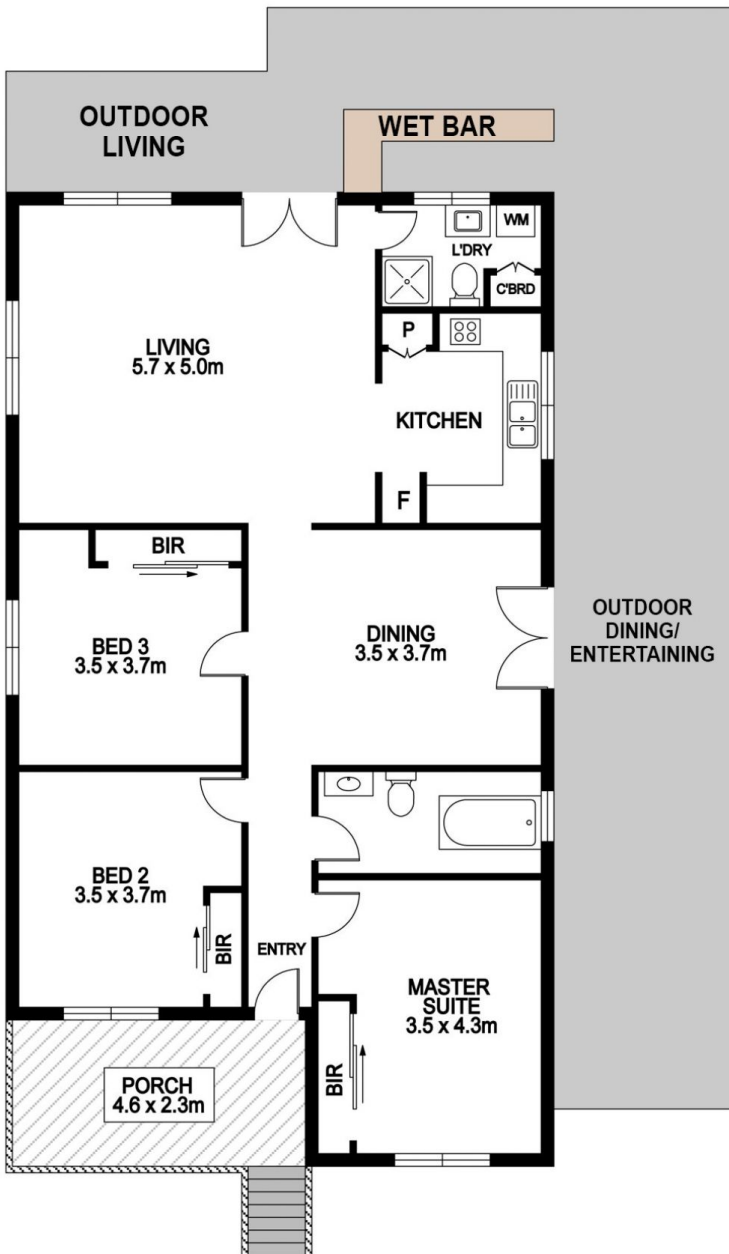
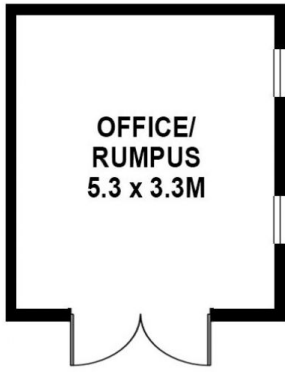
As the polished timber floors lead you through the home you'll pass the 3 double sized bedrooms each fitted with built in wardrobe and ceiling fan. The home further boasts a seamless blend of indoor and outdoor living as the formal

Price : \$ 871,000
Land Size : 717.4 sqm
View : <https://www.elderstoongabbie.com.au/sale/nsw/western-sydney/toongabbie/residential/house/5877308>



Alex Georgiou
02 9896 2333

<https://www.elderstoongabbie.com.au>



30 MARCIA ST TOONGABBIE



DISCLAIMER
DIMENSIONS ARE APPROXIMATE AND SHOULD ONLY BE USED AS A GUIDE
THEY ARE NOT TO SCALE AND NO LIABILITY WILL BE ACCEPTED.