



1/19 Carinya Road Girraween NSW

2 2 1

Centrally located close to Girraween Primary and Pendle Hill station is this brand new, Torrens Title Duplex offering an easy care lifestyle without compromising on space or privacy. Architecturally conceived with an emphasis on a versatile floor plan and quality construction methods, the home features formal lounge, gas kitchen with breakfast bar and dishwasher, open plan dining, 2 bedrooms main with walk-in-robe and 2nd with built-in-robe, family room or potential 3rd bedroom downstairs with air-conditioning, 2 exquisite bathrooms (1 on each level), gas heating provisions, a remote controlled single garage with internal access and a rainwater tank. The covered entertaining area overlooks the low maintenance, landscaped gardens offering the perfect setting to entertain on a small or large scale. This home has the features, presentation and location that even the most discerning buyer will be impressed by so don't miss a fantastic opportunity to buy a

Price : \$ 750,000
Land Size : 226 sqm
View : <https://www.elderstoongabbie.com.au/sale/nsw/parramatta/girraween/residential/semi-detached/5877414>

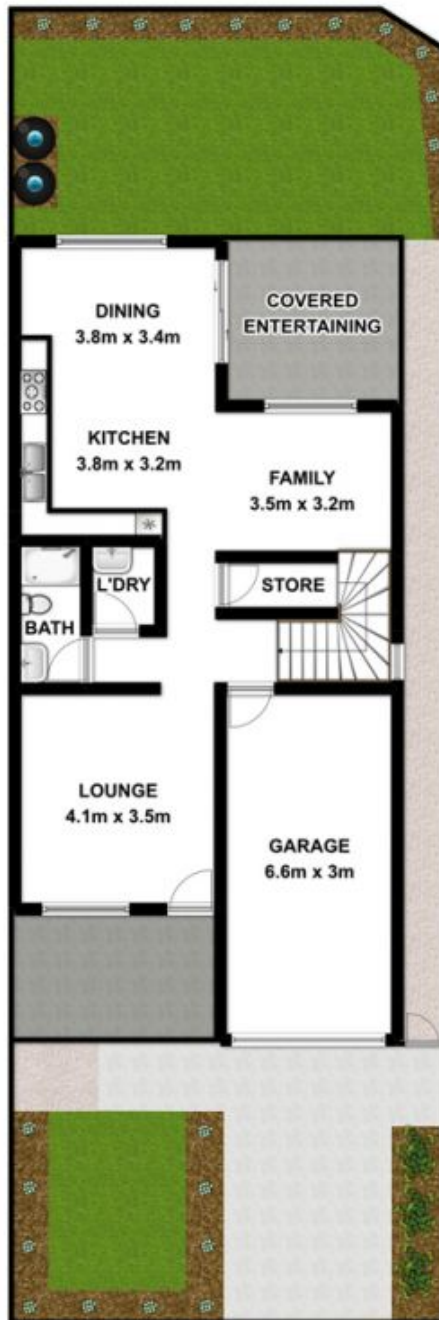


Matt Barham
02 9896 2333



Real Estate

1/19 Carinya Road
Girraween NSW 2145



GROUND FLOOR



FIRST FLOOR

Plans are for presentation purposes only and are not part of any legal document or title. They should not be used as sole reference. Interested parties should make their own enquiries using other sources. Measurements are approximates.