

2/485 Wentworth Avenue Toongabbie NSW

2  1  1 

In terms of sheer convenience and a prime location, it doesn't get any better than this.

This absolutely affordable and highly convenient 2 bedroom apartment located within a few minutes walk to the train station and shopping centre represents an exciting opportunity for astute investors or owner occupiers who demand convenience.

Being situated opposite Toongabbie train platform will save busy commuters valuable travel time, adding to the appeal of this cosmopolitan apartment.

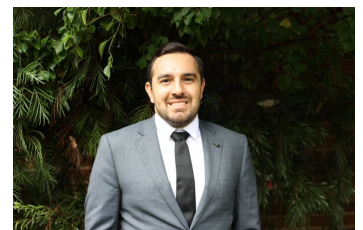
It's first floor position means there are not many stairs to climb and the light filled design includes an enormous kitchen overlooking spacious open plan living areas featuring timber laminate flooring.

Price : \$ 453,000

View : <https://www.elderstoongabbie.com.au/sale/nsw/western-sydney/toongabbie/residential/unit/8012661>



Nick Bardon
02 9896 2333

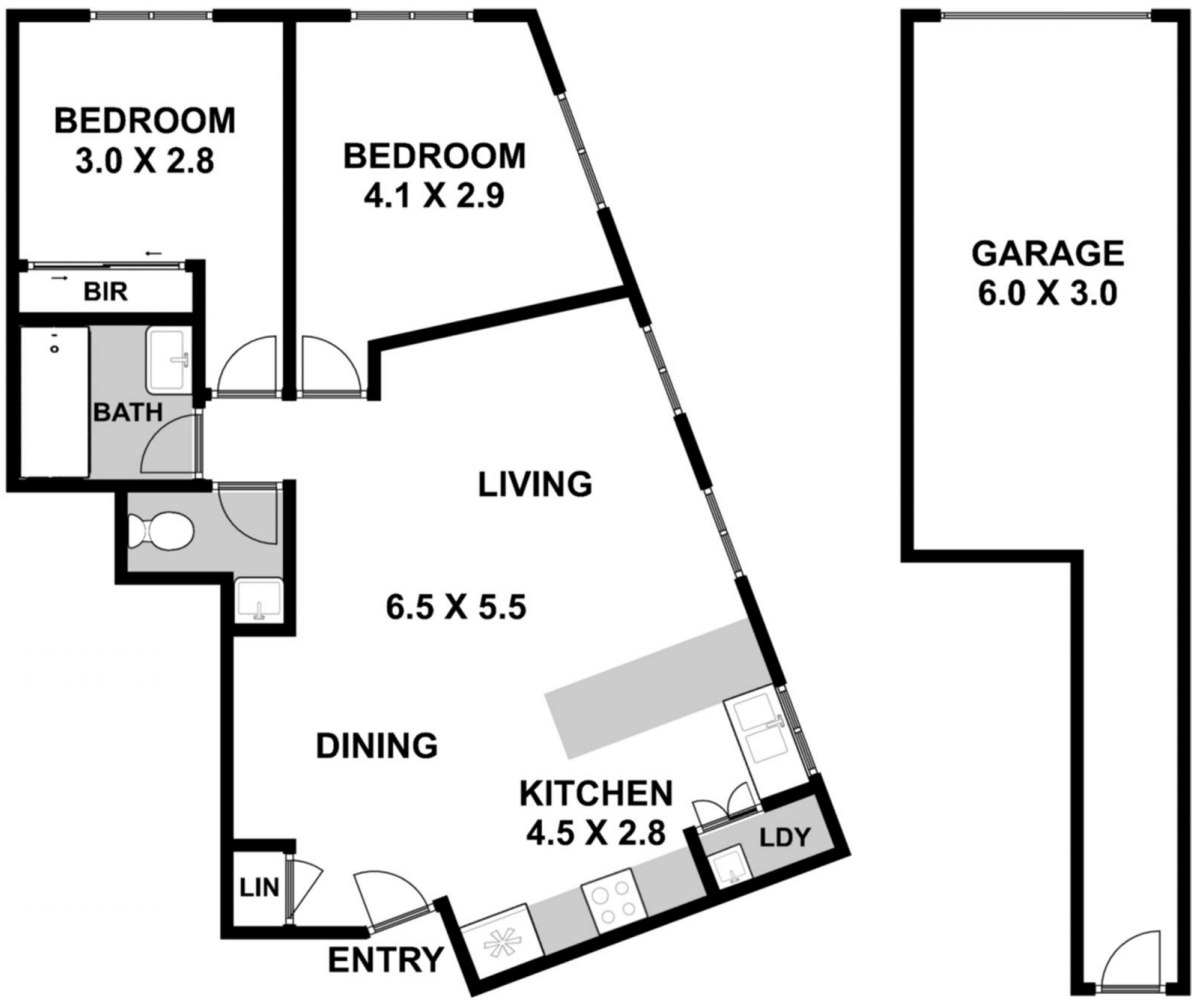


Alex Georgiou
02 9896 2333

2/485 Wentworth Avenue, Toongabbie



Please note:
Floorplan measurements are a guide only.
All dimensions are approximate in their distance and volume.



-  2
-  1
-  1