






**2/104-106 Metella Road Toongabbie NSW**

3  1  2 

The ultimate in design, this impeccable townhouse is defined by its generous proportions, stylish finishes, and convenient location. Superb interiors flow effortlessly over two levels easily accommodating family living yet offering an easy care and maintenance free lifestyle.

- + 3 generous size bedrooms all with air-conditioning and built-in-robos.
- + Deluxe main bathroom plus 2nd toilet downstairs.
- + Open plan kitchen with breakfast bar.
- + Open plan lounge and dining space with air-conditioning.
- + Double garage with remote controlled door and internal access.
- + Enormous, landscaped courtyard ideal for entertaining on a large scale.

Occupying an immensely popular and convenient location

**Price** : \$800,000 - \$850,000  
**Land Size** : 208 sqm  
**View** : <https://www.elderstoongabbie.com.au/sale/nsw/western-sydney/toongabbie/residential/townhouse/8095850>



**Matt Barham**  
02 9896 2333

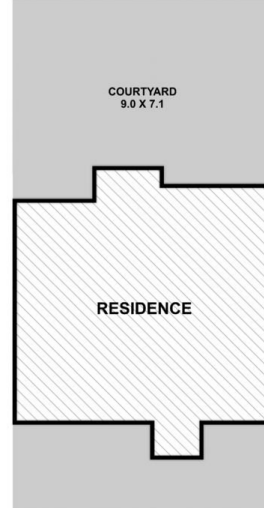
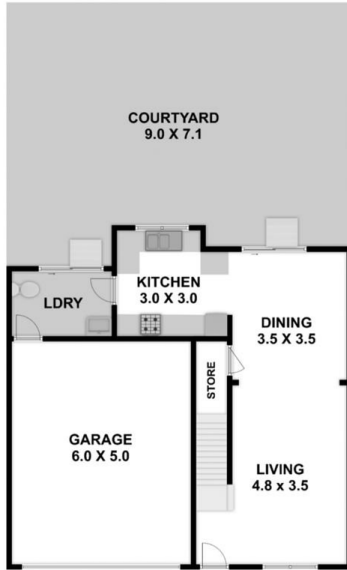


**Lekita Maitland**  
02 9896 2333

# 2/104 Metella Rd Toongabbie



Please note:  
Floorplan measurements are a guide only.  
All dimensions are approximate in their distance and volume.  
We cannot guarantee its accuracy and interested persons should rely on their own enquiries.



-  3
-  1
-  2